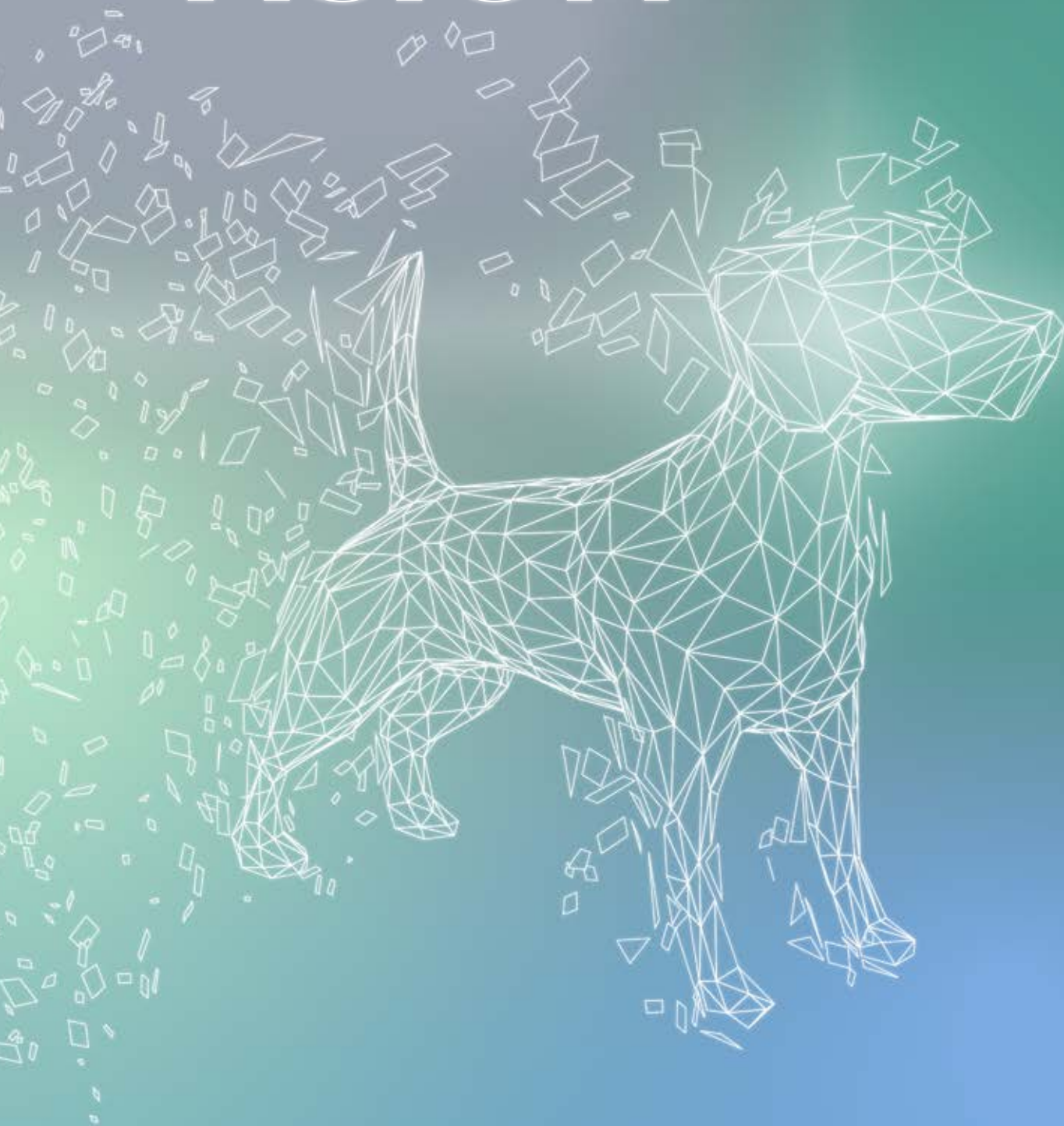


# BEYOND VISION



**NEWTOM**  
CONE BEAM 3D IMAGING

# ALWAYS READY, FAST, PORTABLE

## TOTAL SYNERGY

The X-VS VET means real-time diagnostics, direct USB plug-and-play connection, high definition and immediate results. The X-VS VET uses NNT, the all-in-one software ideal for diagnostics, communication and management of intraoral imaging: perfect for storing, managing and printing images in perfect synchronism with any other device already in the surgery.

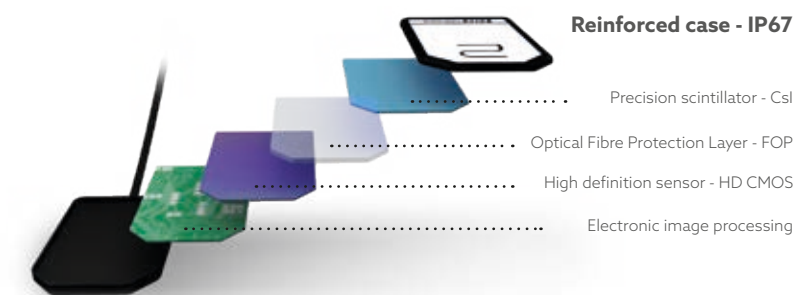


## DUAL FORMAT

The X-VS VET is equipped with a sensor, available in two sizes - ergonomic and with smoothed edges - which adapt it to the anatomy of the patient's oral cavity, guaranteeing outstanding positioning comfort. Reduced dimensions and a maximum active area ensure advanced X-ray diagnosis.

## FIVE-LAYER SENSOR

Five-layer technology, for high-contrast images and precision detail. Cesium Iodide (CsI) scintillator made up of column-like micro-structures that preserve image quality; it first intercepts the X-ray beam and converts it into visible light. The fibre optics layer (Fibre Optics Plate) collimates the radiation onto the sensor and protects it against direct X-ray penetration. The third layer (CMOS HD) is the acquisition device which converts the light into a digital image with 16,384 grey levels. The fourth layer pre-processes the image and converts it into a USB signal. The last layer has a protective function.



# NEWTOM

## CONE BEAM 3D IMAGING

X-VS VET Sensor	Size 1 - Regular	Size 2 - Large
External dimensions (mm)	38.9 x 24.9	41.9 x 30.4
Thickness (mm)	5.3	5.7
Pixel matrix	1500 x 1000	1700 x 1300
Pixel size (µm)	20	20
Maximum resolution (lp/mm)	25	25
Grey levels depth	14-bit acquisition - 16384 maximum grey levels	
Scintillator technology	CsI (Cesium Iodide) with micro-columnar structure	
Direct exposure protection	FOP (Fibre Optics Plate)	
Protection rating	IP 67 (Guaranteed against liquid or dust infiltration)	
Compatibility with X-ray generators	Any AC or DC technology X-ray generator with kV values in the 60-70 kV range and precision control of exposure times	
Connectivity	Direct USB to PC	
Acquisition software (for PC)	iCapture with TWAIN interface	
Image management software (for PC)	NNT (for PC) with DICOM 3.0 interface with free viewer and APP for iPad	
Minimum system requisites		
Supported operating systems	Microsoft® Windows® 10 Professional 64 bit	
Display settings	1280 x 1024; 1344 x 768 or greater, 16 million colours	
Port	USB 2.0 or subsequent	
Power supply	5 VDC, 500 mA (via USB)	



### BU MEDICAL EQUIPMENT

#### SEDE LEGALE ED AMMINISTRATIVA HEADQUARTERS

Cefla s.c. - Via Selice Provinciale, 23/a  
40026 Imola - BO (Italy)  
tel. +39 0542 653111  
fax +39 0542 653344

#### STABILIMENTO PLANT

Via Bicocca, 14/c  
40026 Imola - BO (Italy)  
tel. +39 0542 653441  
fax +39 0542 653601

#### CEFLA NORTH AMERICA

6125 Harris Technology Blvd.  
Charlotte, NC 28269 - U.S.A.  
Toll Free: (+1) 800.416.3078  
fax: (+1) 704.631.4609

NX-VS/VETGB251S00

10/2025

The images and technical specifications shown in this catalog are for indicative purposes only. As part of ongoing technological updates, technical specifications may be subject to changes without prior notice. In accordance with current regulations, in non-EU areas some products, as well as certain technical specifications, may have different availability and configurations. We encourage you to always contact your local distributor for up-to-date technical specifications, availability and configurations.